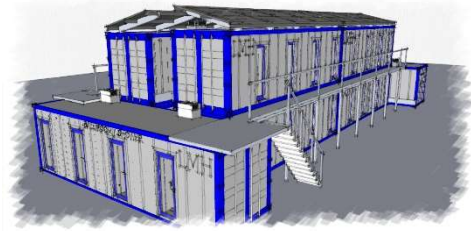


## 4 Module LMH Housing Unit

The LMH Housing Unit consists of 4 individually prefabricated modules inserted into a retrofitted container shell. Unit floor plans and container sizes vary. Modules are prefabricated and interchangeable for maintenance and floor plan upgrade.



### Interior Specification

**HVAC:** Programmable Heating/Cooling systems. (PIONEER® 9,000 BTU 19 SEER 115V DUCTLESS MINI-SPLIT)

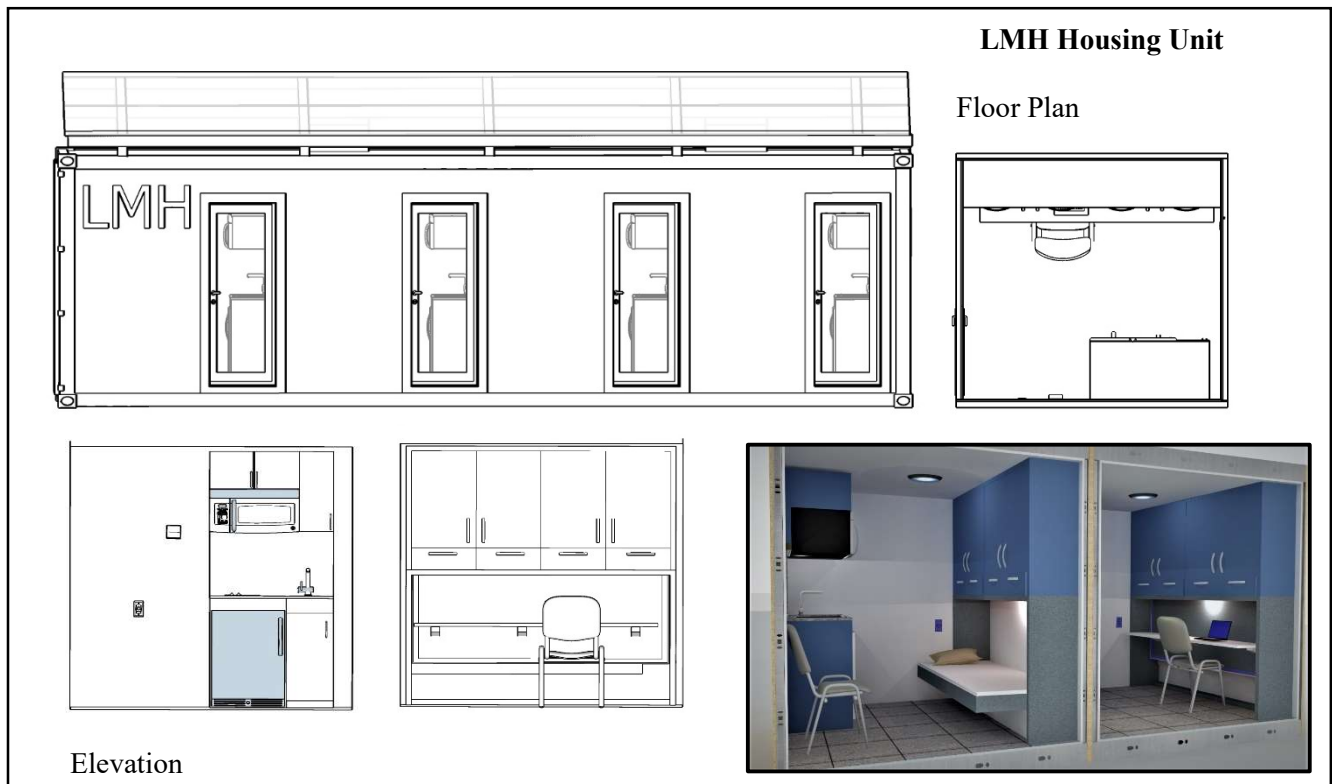
**Plumbing:** Fully plumbed utilities; Timed hot water shutoff. Roof mounted water preheat (optional).

**Electrical:** LED wall and overhead lights; GFI electrical/USB port; Proximity card locks; 50 AMP Electrical panel. Roof mounted PV panels (optional).

**Kitchenette:** Stainless Steel Sink; Stainless Steel Countertop; Separate Storage Area with Door; Storage Drawer; Integrated Backsplash; Refrigerator

**Furniture:** Wall mount Murphy Bed w/Desk.

**Entry Door:** Clear glass door shown. Delivered units will include split light w/frosted glass. Electric door lock with proximity card release. (200 SERIES ELIXIR OUTSWING DOOR 18"X20" SLIDER)



It is now possible to provide the same mission critical design requirements for hardened shelter, privacy, bed, bath and communications at a fraction of the current housing cost and restriction.

LMH housing is simple and reliable transitional housing. Our design and program will save lives while reducing overall government cost and impact.

### TEAM

We are commercial and housing construction experts with 30 years of experience.

### CONTACT

<https://www.ecobaun.com> / [ask@ecobaun.com](mailto:ask@ecobaun.com)