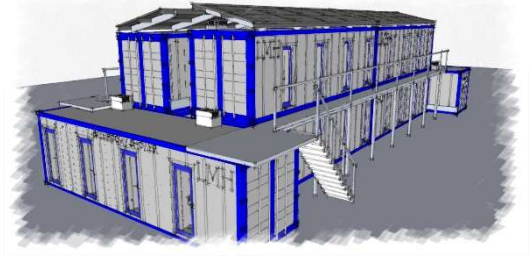


LMH Housing by Ecobaun

4 Module LMH Bath and Shower Unit

Each LMH Bath/Shower Unit consists of 4 individually prefabricated modules inserted into a retrofitted container shell. Unit floor plans may vary. Typical module interiors include: Toilet, Shower, Sink, Mirror, Electrical/USB outlet, Dressing Closet and Bench.



Interior Specification

HVAC: Programable Heating and exhaust systems.

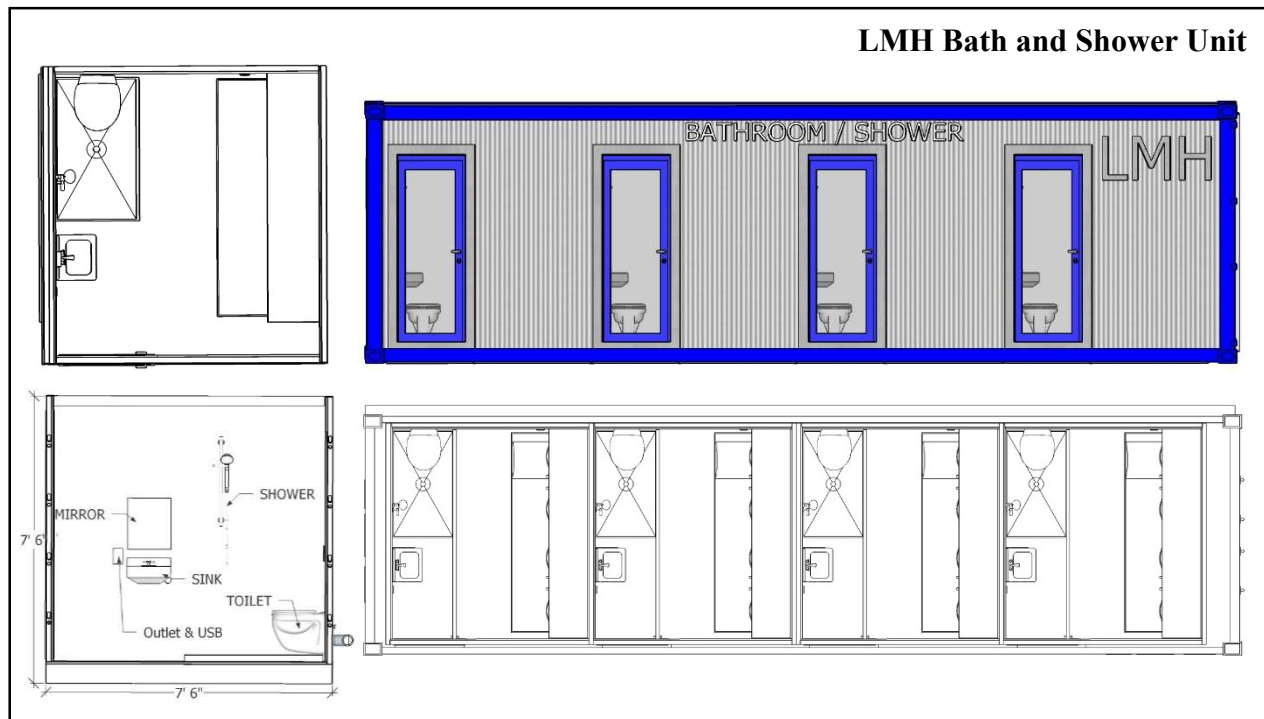
Plumbing: Fully plumbed utilities; Timed hot water shutoff; Roof mounted water preheat (optional).

Electrical: LED wall and overhead lights; GFI electrical/USB port; Proximity card locks; Electrical panel located outside container. Roof mounted PV panels (optional)

Fixtures/Accessories: Fixture specifications to be determined. Toilet accessories include toilet paper dispenser; Paper towel dispenser; soap dispenser; hand sanitizer dispenser.

Furniture: Folding dressing bench; Hanging closet.

Entry Door: Clear glass door shown. Delivered units will include frosted glass. Electric door lock with proximity card release.



It is now possible to provide the same mission critical design requirements for hardened shelter, privacy, bed, bath and communications at a fraction of the current housing cost and restriction.

LMH housing is simple and reliable transitional housing. Our design and program will save lives while reducing overall government cost and impact.

TEAM

We are commercial and housing construction experts with 30 years of experience.

CONTACT

<https://www.ecobaun.com> / ask@ecobaun.com